



## NEUDOL® USER MANUAL



**SMALL**  
in STATURE  
**LARGE**  
in PERFORMANCE

**NEUDOL**  
ADAPTIVELY SMALL & FEISTY

**— FAA & IATA Approved**

Designed and Built for Smaller Sized  
Individuals: Children, Teens, Little People  
(medical condition known as Dwarfism)  
and Small Adults. Overall Weight of up to  
150 lbs and Height up to 5 Feet Tall.

Automobile ♦ Airplane ♦ Train ♦ Cruise Ship ♦ RV





# WEATHERPROOF



Explore your World  
Drive Rain or Shine

**NEUDOL®** is 100% Weatherproof. Designed to be driven everyday no matter what the current weather condition is.

**Our 3-Year Warranty covers ANY & ALL Weather Driving Conditions!**



DO NOT SUBMERGE THE WHEELCHAIR INTO RIVERS, PONDS, LAKES, BATHROOM SHOWERS, SWIMMING POOLS OR THE OCEAN.



# For The Adventurous Souls



## Bump-Dampening

Oval Frame absorbs all the bumps we drive over during the day. Wheelchairs do not have shocks so our frame handles the work for you.

## Adjustable Seat Height

Designed for small framed people ranging up to 5' feet tall. Seat height from ground ranges from 15" to 20". This chair adapts to fit your height.



# HOW TO UNFOLD



Your FOLD & GO WHEELCHAIR is super simple to  
unfold and unfold. It only takes 3-Steps.

## Step 01

### Remote Button

Push UP Arrow Button on Seat Fob



## Step 02

### Frame Lock

Unfold Backrest until the Frame Lock Clicks



## Step 03

### Place Seat Cushion

Place Seat Cushion on Seat Base





# HOW TO FOLD



Your FOLD & GO WHEELCHAIR is super simple to fold and unfold. It only takes 3-Steps.

## Step 01

### Remove Seat Cushion

Remove Seat Cushion from Seat Base



## Step 02

### Backrest Frame Lock

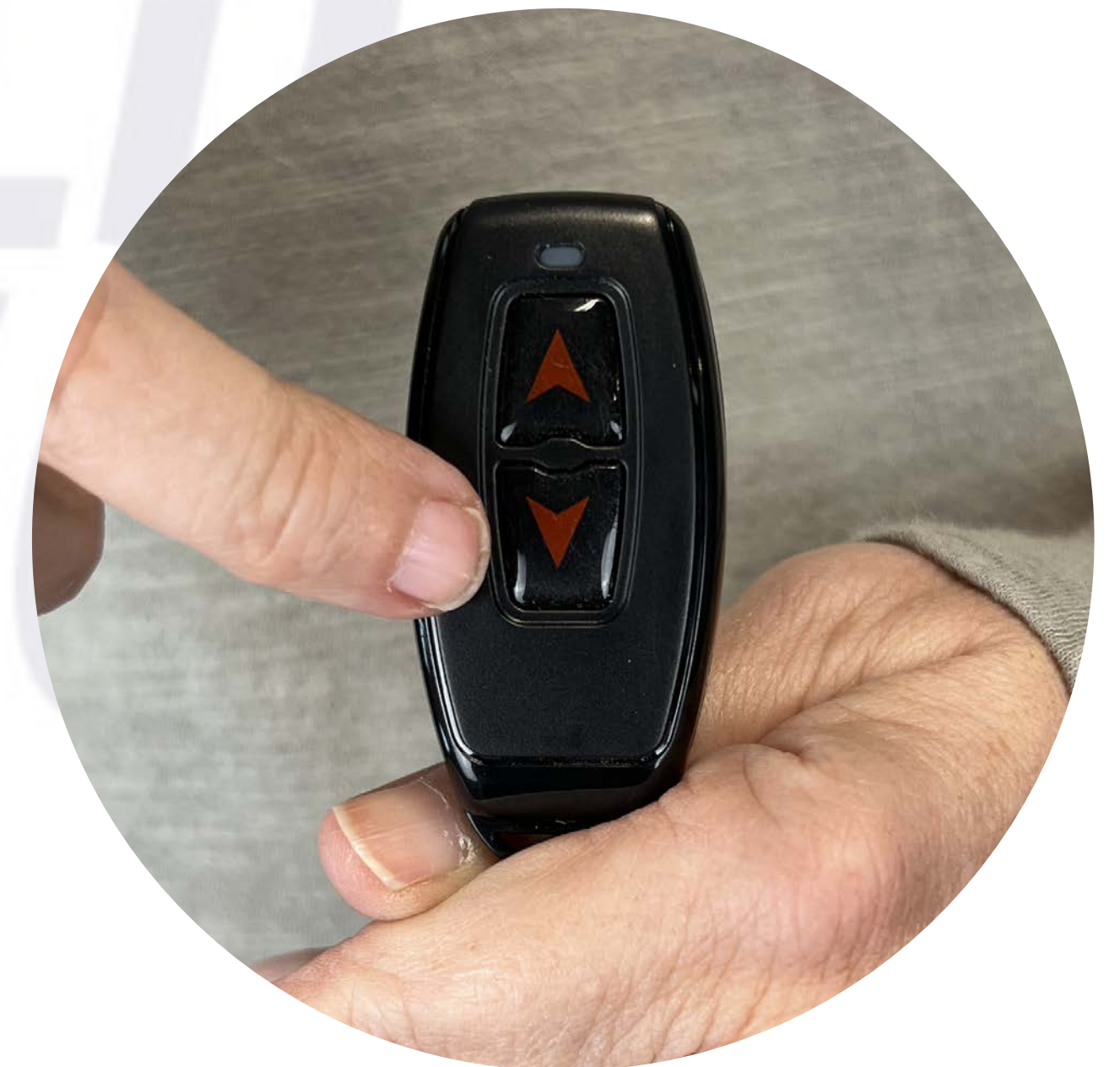
Push Down on Cross Bar to Unlock the Backrest



## Step 03

### Remote Button

Push DOWN Arrow Button on Seat Fob





## 01 DRIVE Mode

Pull Back the RED Lever on Top of Each Motor Wheel, Towards the Rear of the Wheelchair



## 02 MANUAL Mode

Push forward the RED Lever on Top of Each Motor Wheel, Towards the Front of the Wheelchair



# To **DRIVE** or To Be **PUSHED**

**TO DRIVE:** Most of the time in your FOLD & GO we want the freedom and independence to drive ourselves wherever we may want to go.

**TO BE PUSHED:** On the rare occasion that you want to be pushed. We give you that choice by a click of each red lever on the top of each motor wheel.

**PUSH LIKE A WALKER:** Sometimes we need stretch our legs and walk for a couple of minutes. Rather than bring a cane or walker with you, just use your FOLD & GO! Grab the bar above the backrest and push your wheelchair like a shopping cart.

# INDEPENDENCE





# Seat & Backrest Frame curved to match your spine

## Ergonomically Sculpted

We contour our backrest frame to be ergonomic to follow the curvature of your spine. We also provide additional support with our contoured backrest and seat bottom cushions. These ergonomic curves allows us and our customers to sit comfortably in our wheelchairs all day long.



## The Advantages of **NEUDOL**

### Oval Frame Shape

Increases bump-dampening while driving over bricks, cobble stones, pavers, rocks, and more

### Seat Cushion Spring Shock

Under each contoured seat cushion are two red spring shocks to added comfort over rocky roads





## 5-Speed Control Buttons

### Increase SPEED






Press the PLUS + button to increase the speed

### Decrease SPEED

Press the MINUS - button to decrease the speed

## 5-Speed Control Lights

### Speed Control Limits

- 1-Light On: 0.5 MPH 
- 2-Lights On: 1 MPH 
- 3-Lights On: 2 MPH 
- 4-Lights On: 3 MPH 
- All 5-Lights On: 4 MPH 



## Power ON/OFF Buttons

### Power ON

Press the GREEN Line button to turn ON the wheelchair

### Power OFF

Press the RED Circle button to turn OFF the wheelchair

## Battery Indicator Lights

### Charge Levels

A Total of 7 Colored Lights  
Reflect the Battery Level.  
The 7 Joystick lights do not change colors: 3 green lights, 3 amber lights, and 1 red light.





# JOYSTICK



## JOYSTICK TROUBLESHOOTING



### Flash Once

Joystick cable is loose to CPU under the seat

### Flash Twice

LEFT Motor Wheel is NOT Connected to CPU

### Flash 3 Times

RIGHT Motor Wheel is NOT Connected to CPU

### Flash 4 Times

Battery not Getting enough Voltage to Charge

### Flash 5 Times

LEFT Motor Wheel Cable is Loose

### Flash 6 Times

RIGHT Motor Wheel Cable is Loose

### Flash 7 Times

LEFT Motor Brake Value is Loose

### Flash 8 Times

RIGHT Motor Brake Value is Loose

### Flash 9 Times

Contact FOLD & GO One Stop Repair Team

### Non-Stop Beeping

A Circuit Board inside the CPU is Loose.

Meaning the wheelchair has been dropped

from a height of more than 4 feet or Hit by

Blunt Force Trauma Object

### Beeps in ANY Direction

Motor Wheels are in MANUAL Mode. Push the

Red Levers on the top of each motor forward

### No Lights on the Joystick

This means the batteries are dead and the

wheelchair needs to be charged

### One Click at Start

This Click sound means the electromagnetic

brakes have RELEASED to start driving. This is

normal functioning sound for our wheelchairs

### One Click at Stop

This Click sound means the electromagnetic

brakes have ENGAGED to stop driving. This is

normal functioning sound for our wheelchairs



# HOW TO CHARGE THE BATTERIES

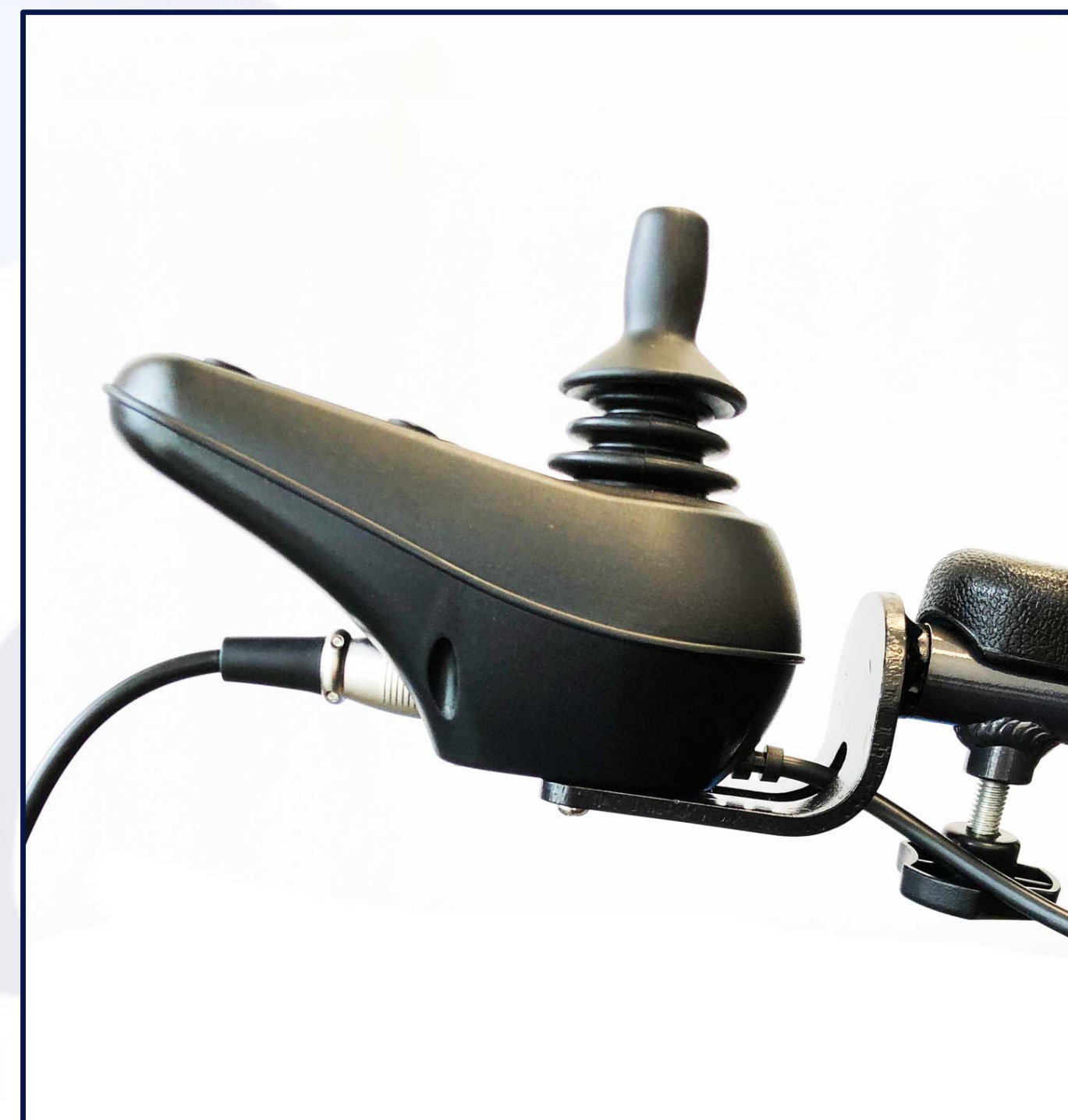
## TWO Charging OPTIONS



### External Battery Charging

PLUG the External Cable into the Circular end of the Charger. Then plug the charger into the top of each battery. This METHOD allows you to leave the chair in the car and bring just the batteries into the house to charge individually.

**Total Charging Time: 10-Hours (5-Hours for each battery)**



### In-Chair Battery Charging

PLUG the Circular end of the charging cord into the port on the bottom of your joystick. This METHOD charges both batteries simultaneously. This is by far the fastest of the two charging options.

**Total Charging Time: Only 5-Hours**

16 MILES PER CHARGE

BATTERY LIFE: 1000 CHARGES



# NEUDOL® Dimensions

- Net Weight with Batteries: 72 LBS
- User Weight Limit: Up to 150 LBS
- Seat Height Travel Range: Up to 5 inches
- Unfolded Height 36 inches
- Overall Width: 21 inches
- Folded Height 18 inches
- Folded Length: 32 inches
- Seat Width Between Armrests: 17 inches
- Seat Cushion: 16 x 16 inches
- Backrest Seat Height: 18 inches
- Floor to Top of Backrest Height: 32 to 37 inches
- Floor to Seat Cushion Height: 15 to 20 inches
- Floor to Armrest Height: 22 to 27 inches
- Rear All-Terrain Tread Wheel: 12 inches by 2.5 inches
- Front All-Terrain Tread Wheel: 8 inches by 2 inches
- Front to Back Wheelbase Length: 38 inches
- Super Tight Turning Radius: 32 inches





NO LIMITATIONS



# 25° HILL + CLIMBING

## **Ascend a Steep Object**

Everyday scenarios are steeper than an 8-12° handicapped ramp. We built our chairs to Climb: trails, driveways, parking garages, gangways of cruise ships and airports, cross walks, street corners, and MORE!

NO BOUNDARIES



# Common Sense Driving Practices

## UNDERSTANDING YOUR ENVIRONMENT

Don't try to drive your FOLD & GO WHEELCHAIR while you are on a transportation vehicle that is in motion, like a bus, subway, train, light rail or airplane.

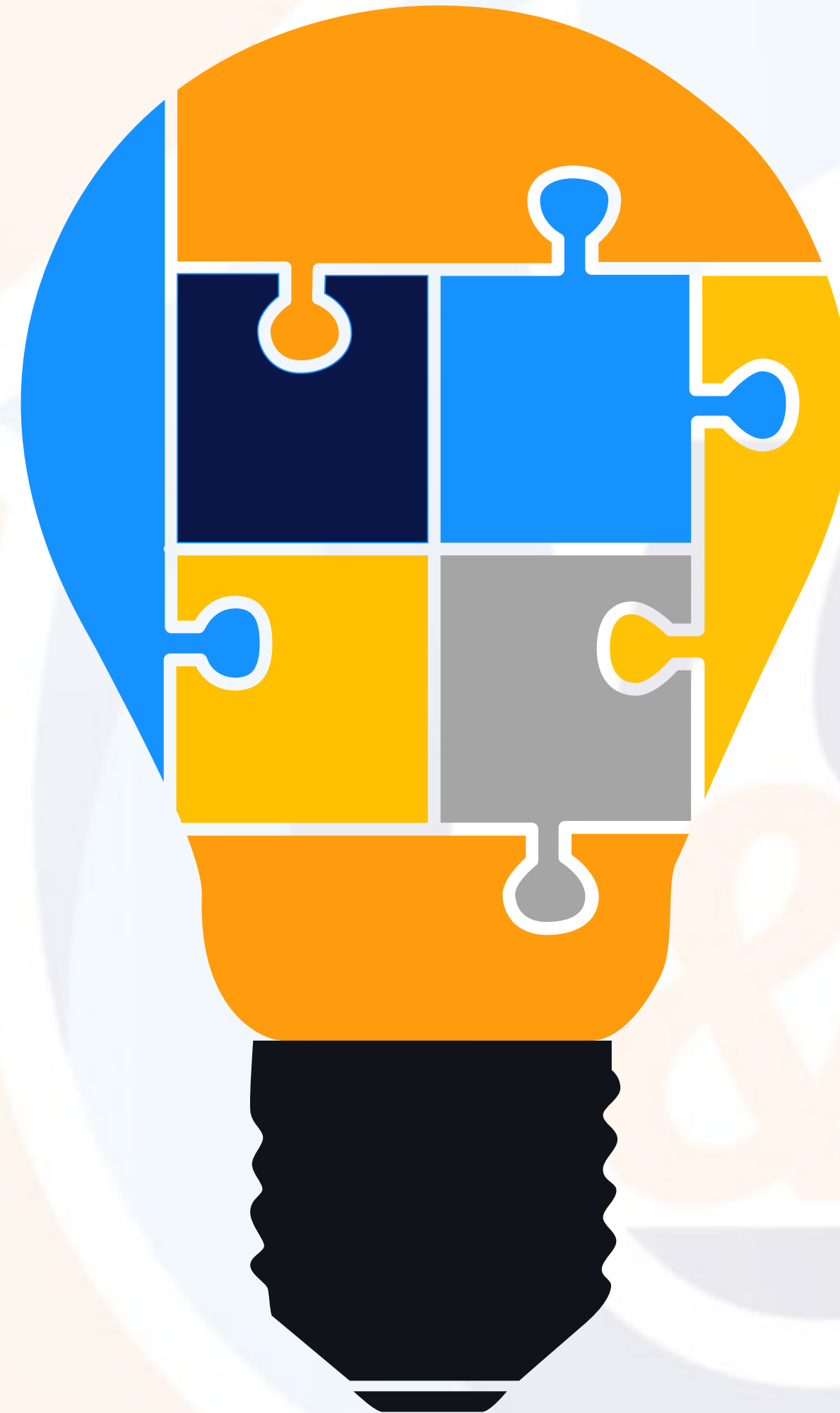
While using public transportation vehicles, ALWAYS secure the floor straps to the frame of your FOLD & GO WHEELCHAIR.

In many countries, power wheelchairs are NOT allowed to drive on public roads. You must observe and obey all traffic laws.

Your FOLD & GO WHEELCHAIR is designed to be weatherproof. Disassembling any of the electronic components or removing the batteries from their watertight housing sleeve will compromise the weatherproof seal on our electronics.

When driving your FOLD & GO WHEELCHAIR always sit back in the seat, avoid leaning over the armrests and/or bending forward over the footrest.

Use caution driving your FOLD & GO WHEELCHAIR at night. Your chair comes with reflective stickers on the front and rear. Headlights and Taillights are also available under the accessories page on our website.



When driving your FOLD & GO WHEELCHAIR on slopes or hills, always approach at a straight angle to the incline. Choose the approach that best minimizes any side angles. If you do not make it up the slope on the first attempt reverse back down the slope while keeping the wheelchair straight. NEVER try to turn around while on a slope.

When getting in or out of your FOLD & GO WHEELCHAIR remember to turn OFF the joystick. Otherwise, if you bump the joystick with your arm, the chair will move unexpectedly on you.

Never attempt to drive your FOLD & GO WHEELCHAIR down or up a staircase, or escalator. No matter how much fun it looks like it would be.

When an elevator is not available, then fold up your FOLD & GO WHEELCHAIR and roll it up or down a staircase. Put the Motor wheels into MANUAL mode to help the chair roll up each step with ease.



## WeatherPROOF

**NEUDOL** is 100% Weatherproof.  
Designed to be driven everyday no  
matter what the current weather  
conditions.

Our 3-Year Warranty covers ALL  
weather driving conditions...PERIOD!



# 4-SEASONS of DRIVING CONDITIONS