



## MAGNESIUM USER MANUAL



# BUILT TOUGH MagSHOCK

— FAA & IATA Approved

We have designed our chairs to travel  
Get out of your house and see the world  
Do what your heart desires

Automobile ♦ Airplane ♦ Train ♦ Cruise Ship ♦ RV





# WEATHERPROOF

## Explore your World Drive Rain or Shine

Our Magnesium Wheelchairs are 100% Weatherproof. Designed to be driven everyday no matter what the current weather condition is.

**Our 3-Year Warranty covers ANY & ALL weather driving conditions!**



DO NOT SUBMERGE THE WHEELCHAIR INTO RIVERS, PONDS, LAKES, BATHROOM SHOWERS, SWIMMING POOLS OR THE OCEAN.





# For The Adventurous Souls



## Bump-Dampening

Magnesium Oval Frame absorbs all the bumps we drive over during the day. Wheelchairs do not have shocks so our frame handles the work for you.

## Mountain Bike Frame

We got the Frame Material Idea from the Mountain Bike Community. Magnesium Mountain Bike Frames handle the trail with ease, and so do our Wheelchairs.



# HOW TO UNFOLD



Your FOLD & GO WHEELCHAIR is super simple to  
unfold and unfold. It only takes 3-Steps.

## Step 01

### Gravity Assist

Hold the Backrest & Jerk to Open



## Step 02

### Frame Lock

Frame Locks Automatically when Unfolded



## Step 03

### Lower Armrests

Frame Automatically Locks when Unfolded





# HOW TO FOLD



Your FOLD & GO WHEELCHAIR is super simple to fold and unfold. It only takes 3-Steps.

## Step 01

### Raise Armrests

Lift Up the Left and Right Armrests



## Step 02

### Frame Lock

Push the Lever to UNLOCK the Frame



## Step 03

### Gravity Assist

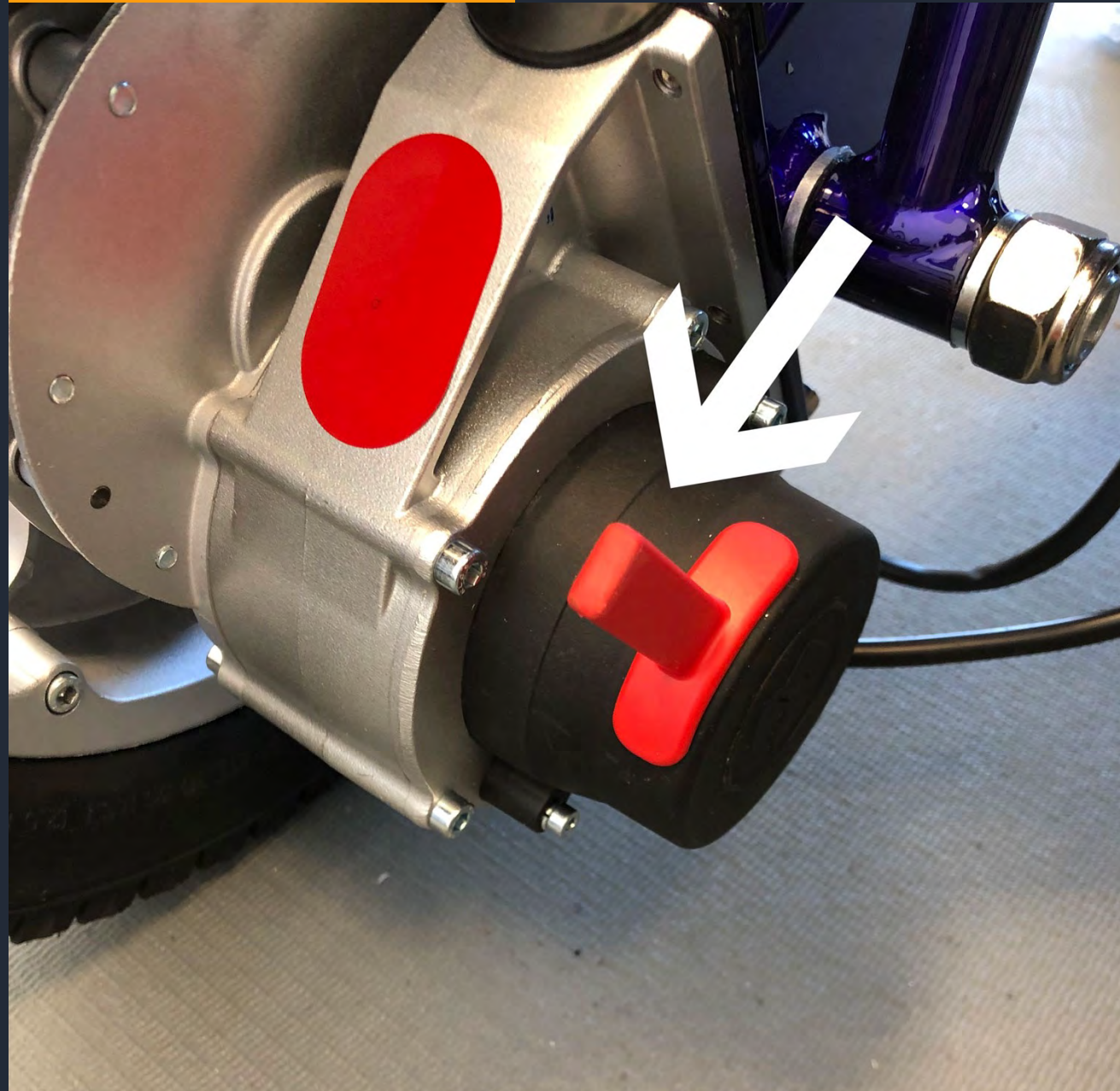
Push the Backrest Forward to Collapse





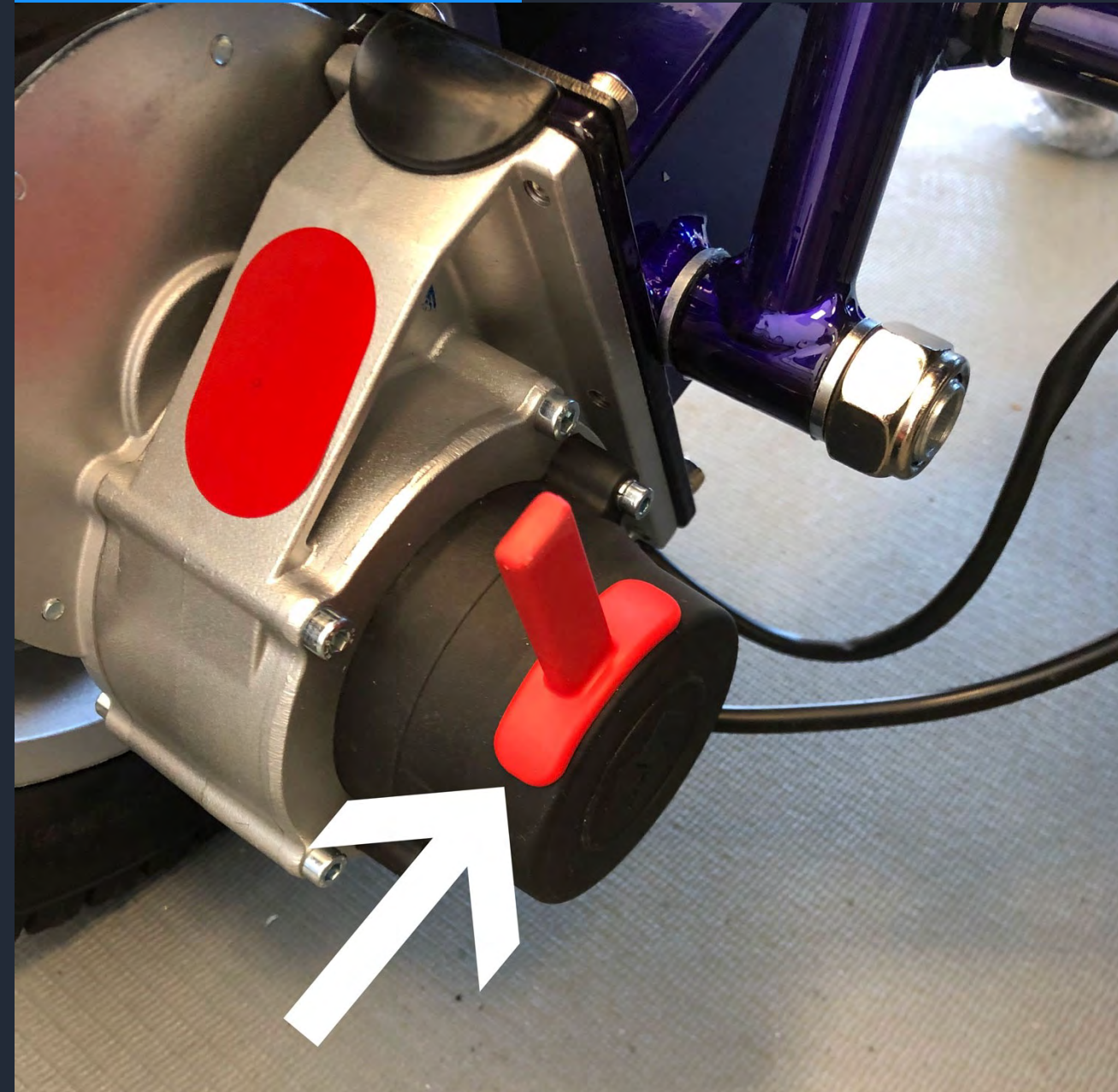
## 01 Drive Mode

Pull Back the RED Lever on Top of Each Motor Wheel, Towards the Rear of the Wheelchair



## 02 Manual Mode

Push forward the RED Lever on Top of Each Motor Wheel, Towards the Front of the Wheelchair



# To **DRIVE** or To Be **PUSHED**

**TO DRIVE:** Most of the time in your FOLD & GO we want the freedom and independence to drive ourselves wherever we may want to go.

**TO BE PUSHED:** On the rare occasion that you want to be pushed. We give you that choice by a click of each red lever on the top of each motor wheel.

**PUSH LIKE A WALKER:** Sometimes we need to stretch our legs and walk for a couple of minutes. Rather than bring a cane or walker with you, just use your FOLD & GO! Grab the bar above the backrest and push your wheelchair like a shopping cart.

# INDEPENDENCE





**MagCONTOUR™**  
ergonomically sculpted for spine support

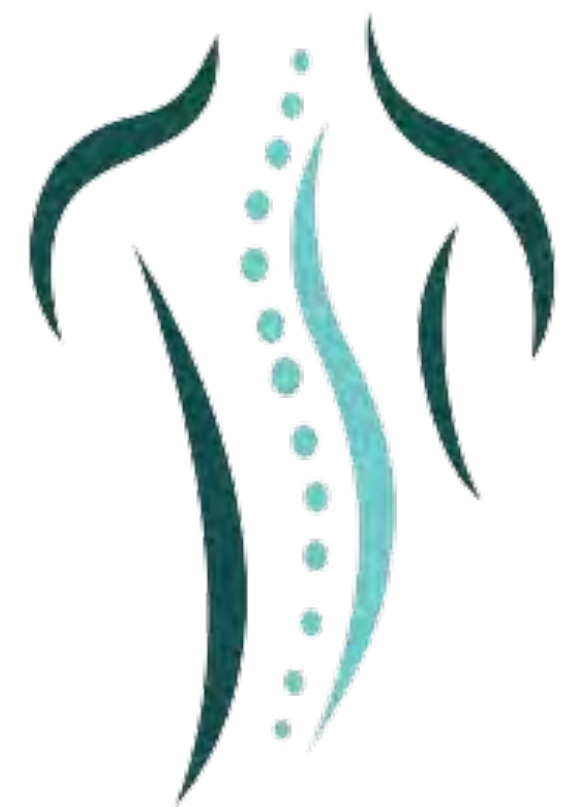
# Our Magnesium Frame curved to match your spine

- 
- 
- 
- 



## Ergonomically Sculpted

We contour our backrest frame to be ergonomic to follow the curvature of your spine. We also provide additional support with our contoured backrest and seat bottom cushions. These ergonomic curves allows us and our customers to sit comfortably in our wheelchairs all day long.



## The Advantages of **MagCONTOUR™**

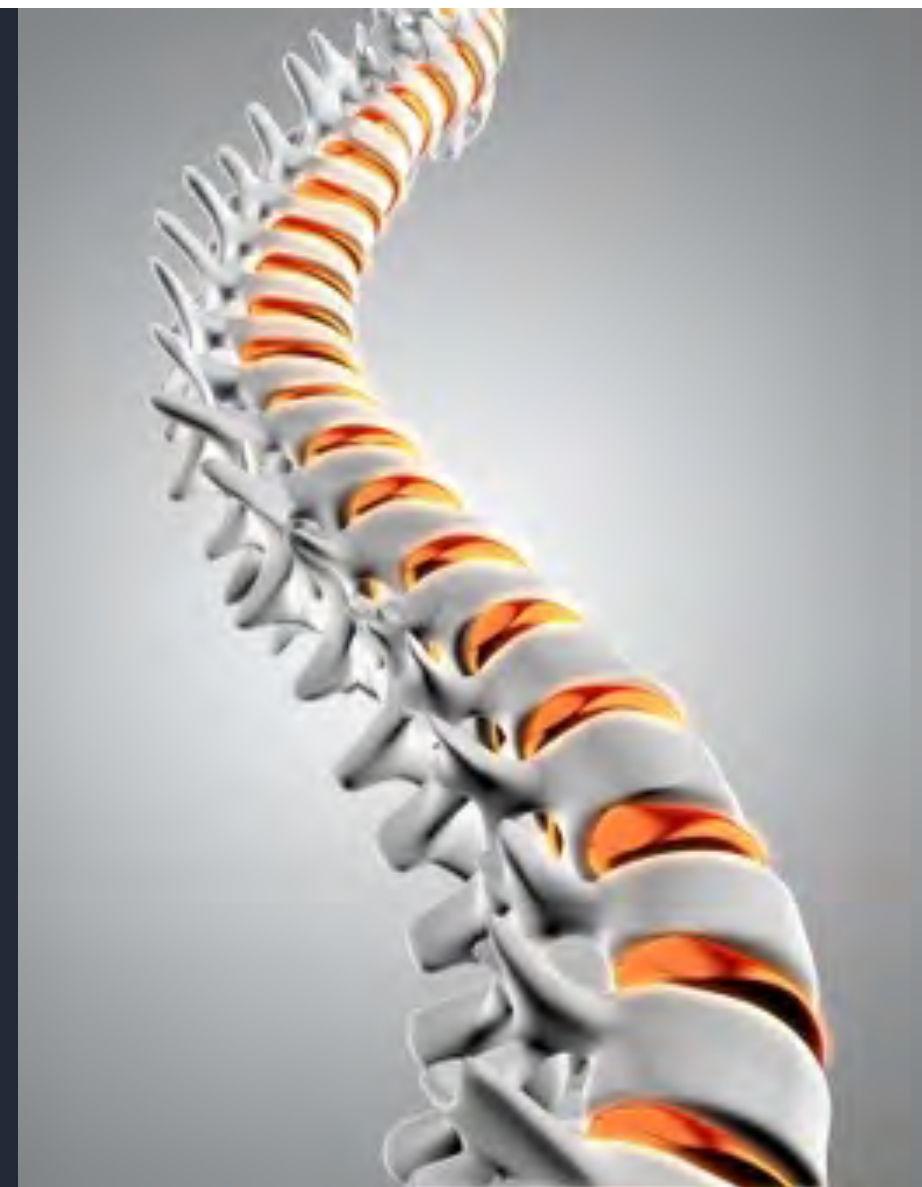


### Oval Frame Shape

Increases bump-dampening while driving over bricks, cobble stones, pavers, rocks, and more

### Seat Cushion Spring Shock

Under each contoured seat cushion are two red spring shocks which add comfort over rocky roads





## 5-Speed Control Buttons

### Increase SPEED






Press the PLUS + button to increase the speed

### Decrease SPEED

Press the MINUS - button to decrease the speed

## 5-Speed Control Lights

### Speed & Torque Limits

- 1-Light = 0.5 MPH & 20% Torque 
- 2-Lights = 1 MPH & 40% Torque 
- 3-Lights = 2 MPH & 60% Torque 
- 4-Lights = 3 MPH & 80% Torque 
- 5-Lights = 4 MPH & 100% Torque 



## Power ON/OFF Buttons

### Power ON

Press the GREEN Line button to turn ON the wheelchair

### Power OFF

Press the RED Circle button to turn OFF the wheelchair

## Battery Indicator Lights

### Charge Levels

A Total of 7 Green Lights Reflect the Current Battery Levels. The Lights Turn Off 1-by-1 Starting at the Top Down to the Last Bottom Light





## JOYSTICK TROUBLESHOOTING



### Flash Once

Joystick cable is loose to CPU under the seat

### Flash Twice

LEFT Motor Wheel is NOT Connected to CPU

### Flash 3 Times

RIGHT Motor Wheel is NOT Connected to CPU

### Flash 4 Times

Battery not Getting enough Voltage to Charge

### Flash 5 Times

LEFT Motor Wheel Cable is Loose

### Flash 6 Times

RIGHT Motor Wheel Cable is Loose

### Flash 7 Times

LEFT Motor Brake Value is Loose

### Flash 8 Times

RIGHT Motor Brake Value is Loose

### Flash 9 Times

Contact FOLD & GO One Stop Repair Team

### Non-Stop Beeping

A Circuit Board inside the CPU is Loose.

Meaning the wheelchair has been dropped

from a height of more than 4 feet or Hit by

Blunt Force Trauma Object

### Beeps in ANY Direction

Motor Wheels are in MANUAL Mode. Push the

Red Levers on the top of each motor forward

### No Lights on the Joystick

This means the batteries are dead and the

wheelchair needs to be charged

### One Click at Start

This Click sound means the electromagnetic

brakes have RELEASED to start driving. This is

normal functioning sound for our wheelchairs

### One Click at Stop

This Click sound means the electromagnetic

brakes have ENGAGED to stop driving. This is

normal functioning sound for our wheelchairs



**ELECTRICITY CAUTION:** Only plug the Charger into a Standard 110 Volt or 220 Volt Outlet. Do not use a GFI Outlet, Light Switch/Plug Outlet Combo, Extension Cord or Surge Protector.

# HOW TO CHARGE THE BATTERIES



## External Battery Charging

PLUG the Charger Directly into the port located on the Top of each Battery. This METHOD allows you to leave the Chair in the Car and bring just the Batteries into the House to Charge Individually.

**Total Charging Time: 10-Hours (5-Hours for each battery)**



## In-Chair Battery Charging

PLUG the Charger Directly into the port located on the bottom of your joystick. This METHOD charges BOTH Batteries Simultaneously. This is the fastest of the two charging options on your FOLD & GO.

**Total Charging Time: Only 5-Hours**

# TWO Charging OPTIONS

16 MILES PER CHARGE

BATTERY LIFE: 1000 CHARGES



# MagSHOCK Dimensions

- Net Weight with Batteries: 60 LBS
- Weight Capacity: 400 LBS
- Unfolded Height 38 inches
- Overall Width: 24 inches
- Folded Height 36 inches (with Joystick, 30 inches w/o)
- Folded Width: 16 inches
- Seat Width Between Armrests: 20 inches
- Seat Depth: 20 inches
- Backrest Height: 21 inches
- Floor to Seat Cushion Height: 20 inches
- Floor to Armrest Height: 28 inches
- Rear All-Terrain Tread Wheel: 12 inches by 2.5 inches
- Front All-Terrain Tread Wheel: 8 inches by 2 inches
- Front to Back Wheelbase Length: 40 inches
- Super Tight Turning Radius: 32 inches





NO LIMITATIONS



# 25° HILL + CLIMBING

## Ascend a Steep Object

Everyday scenarios are steeper than an 8-12° handicapped ramp. We built our chairs to Climb: trails, driveways, parking garages, gangways of cruise ships and airports, cross walks, street corners, and MORE!

NO BOUNDARIES





Does it  
Fit On  
My  
**GOLF  
CART...**  
Really?





# Common Sense Driving Practices

## U N D E R S T A N D I N G   Y O U R   E N V I R O N M E N T

Don't try to drive your FOLD & GO WHEELCHAIR while you are on a transportation vehicle, like a bus, subway, train, or airplane.

While using public transportation vehicles, ALWAYS hook the floor straps to the frame of your FOLD & GO WHEELCHAIR.

In many countries, power wheelchairs are NOT allowed to drive on public roads. You must observe and obey all traffic laws.

Your FOLD & GO WHEELCHAIR is designed to be weatherproof. Disassembling any of the electronic components or removing the batteries from their watertight housing sleeve will compromise the weatherproof seal on the electronics.

When driving your FOLD & GO WHEELCHAIR always sit back in the seat, avoid leaning or bending forward over the footrest.

Use caution driving your FOLD & GO WHEELCHAIR at night. Your chair comes with reflective stickers on the front and rear. Headlights and Taillights are also available under the accessories page on our website.



When driving your FOLD & GO WHEELCHAIR on slopes or hills, always approach at a straight angle to the incline. Choose the approach that best minimizes any side angles. If you do not make it up the slope on the first attempt reverse back down the slope while keeping the wheelchair straight. NEVER try to turn around while on a slope.

When getting in or out of your FOLD & GO WHEELCHAIR remember to turn OFF the joystick. Otherwise, if you bump the joystick with your arm, the chair will move unexpectedly on you.

Never attempt to drive your FOLD & GO WHEELCHAIR down or up a staircase, or escalator. No matter how much fun it looks like it would be.

When an elevator is not available, then fold up your FOLD & GO WHEELCHAIR and roll it up or down a staircase. Put the Motor wheels into MANUAL mode to help the chair roll up each step with ease.



## WeatherPROOF

Our Magnesium Wheelchairs are 100% Weatherproof. Designed to be driven everyday no matter what the current weather conditions.

Our 3-Year Warranty covers ALL weather driving conditions...PERIOD!



# 4-SEASONS of DRIVING CONDITIONS