



MAGNESIUM USER MANUAL



ARK 550[®]

**BUILT
OFF-ROAD
TOUGH**

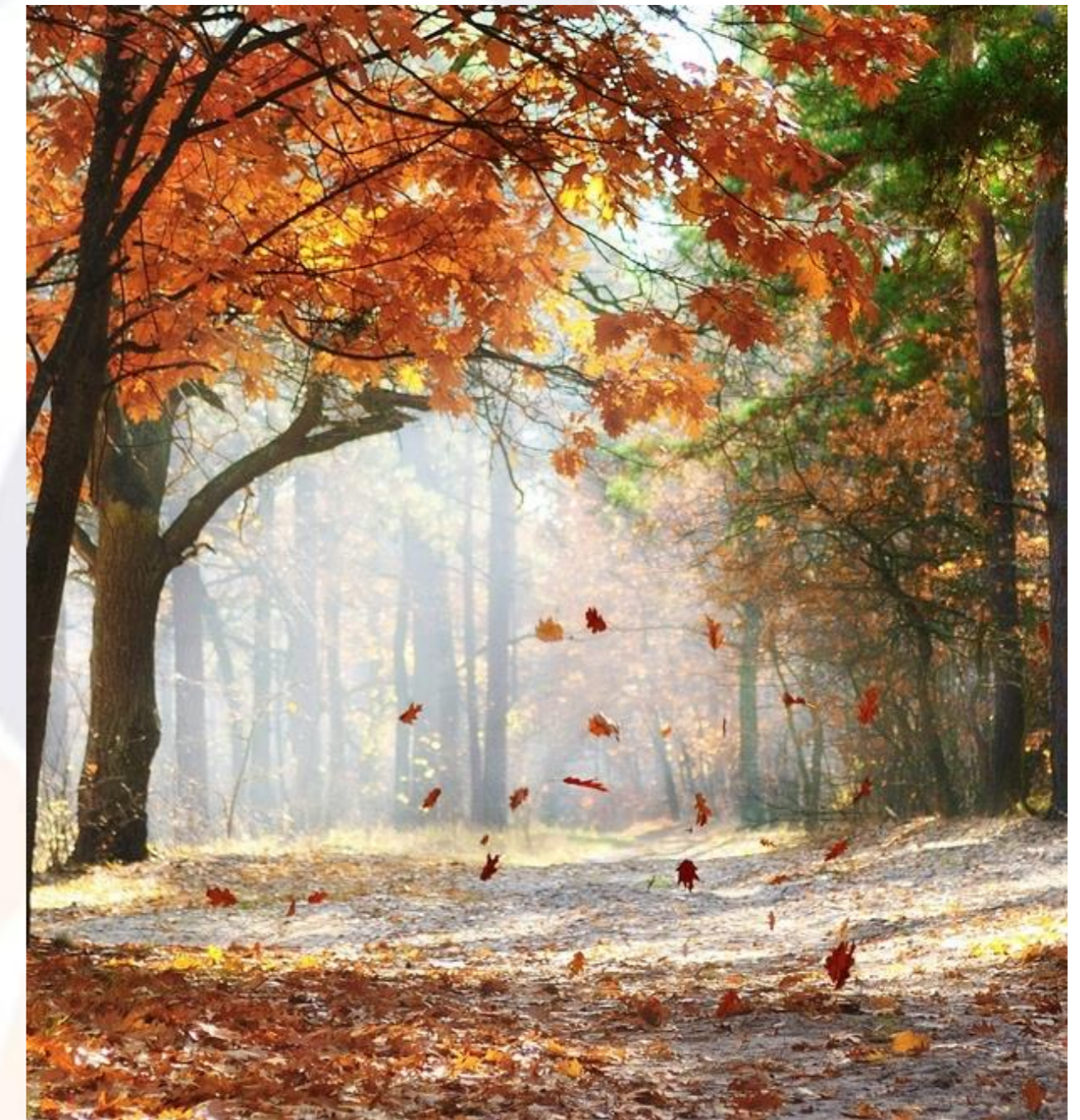
— FAA & IATA Approved

We have designed our chairs to travel
Get out of your house and see the world
Do what your heart desires

- ◆ Automobile
- ◆ Airplane
- ◆ Train
- ◆ Cruise Ship
- ◆ RV



WEATHERPROOF



Explore your World
Drive Rain or Shine

Disabilities Don't take a Break for the Weather or
Rough Terrain, and neither should Your Mobility.

**Our 3-Year Warranty covers ANY &
ALL-Weather driving conditions!**



DO NOT SUBMERGE THE WHEELCHAIR
INTO RIVERS, PONDS, LAKES,
BATHROOM SHOWERS, SWIMMING
POOLS OR THE OCEAN.

For The Adventurous Outdoors



Bump-Dampening

Our **Magnesium Frame** is designed to absorb the bumps and shocks of everyday terrain. Since wheelchairs don't have traditional suspension, our frame does the work—giving you a smoother, more comfortable ride wherever you go.

Mountain Bike Frame

We took a page from the mountain biking world—where **Magnesium Frames** are prized for their strength, durability, and shock absorption. Just like mountain bikes handle rugged trails with ease, our wheelchairs are built to tackle everyday terrain effortlessly.

The Ultimate Caregiver Remote Bluetooth for Wireless Driving

JOYSTICK KNOB: Use the control knob to steer the chair 360 degrees.

LOCK BUTTON: Press this button to **LOCK** the Chair's Joystick from driving, while this Remote is actively driving the chair.

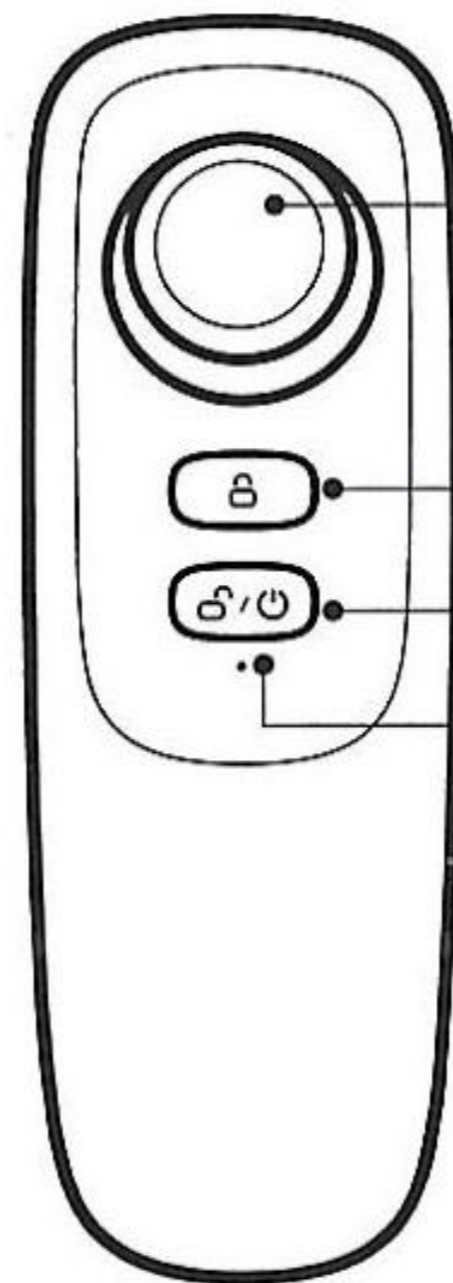
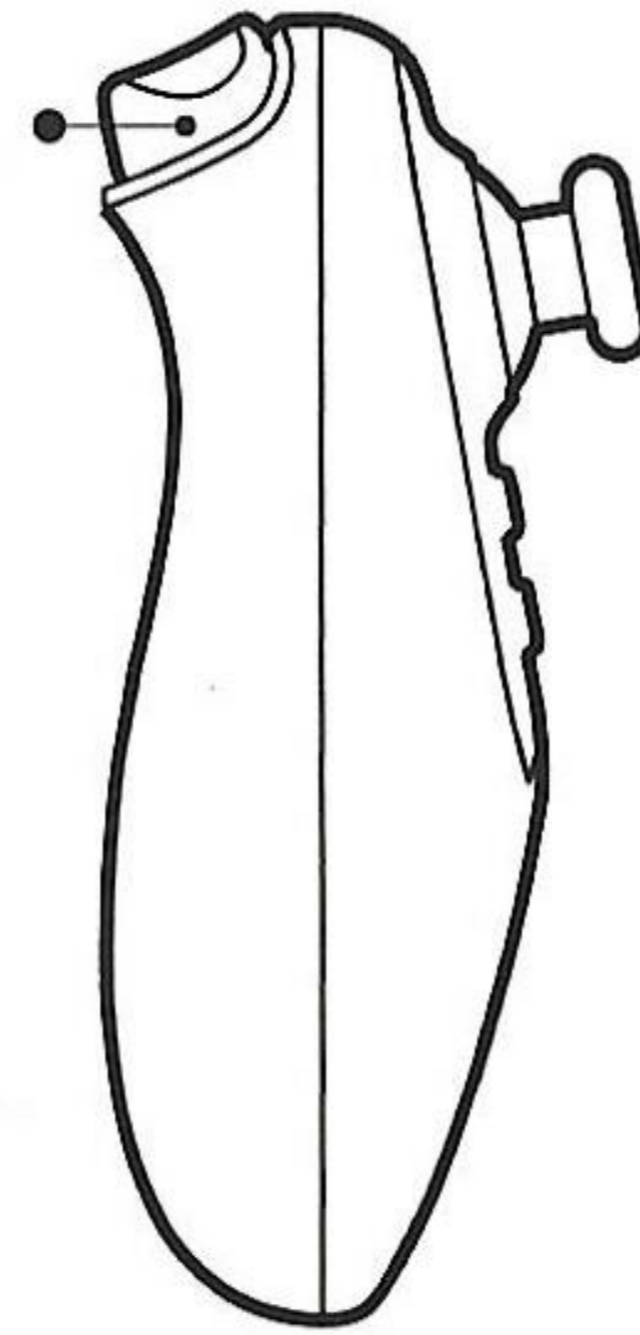
POWER ON/OFF & UNLOCK: Press this button to **UNLOCK** the Chair's Joystick to enable driving and to turn off this Remote.

SPEED ADJUSTING TRIGGER: Press this Trigger to change Speed Gears from level 1-3.

AUTO SHUT OFF: This Remote will automatically power off when not used for more than **20 seconds**.

FOLD & GO WHEELCHAIRS

Speed adjusting



Joystick

Lock

Power on/ unlock

Indicating light



Bluetooth Remote Control

Need a Chauffeur?

Every FOLD & GO comes with a Bluetooth Handheld Caregiver Remote Controller. Press the **Power Button** to turn ON/OFF. Press the **Lock Button** to prevent the Joystick from Driving the Chair.

When Using the Remote Control – Chair is limited to 50% Speed or Gear 3 for Safety.





20+ Drive Settings

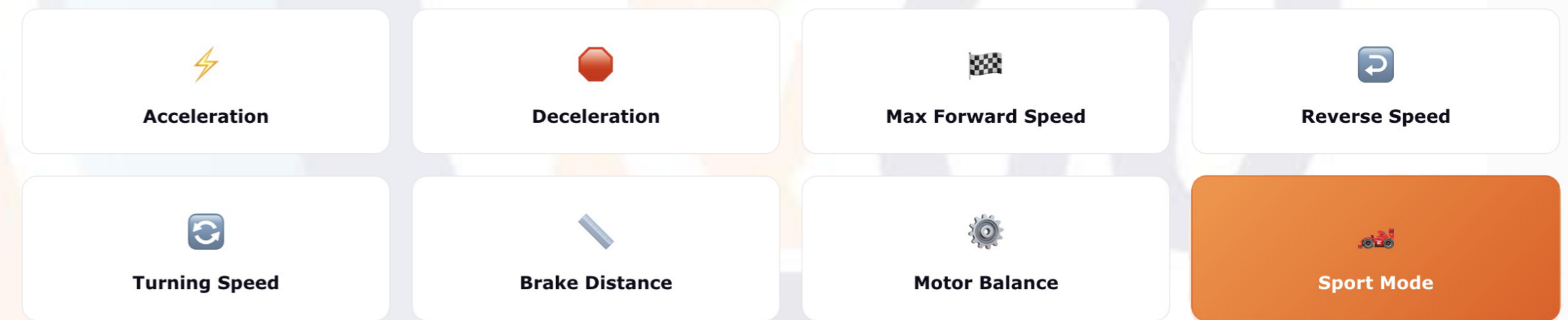
AdaptGO™ is Designed to Help you customize your drive settings to fit your mobility needs — and great for loved ones caring for those of us with declining mobility.



AdaptGO™

Adapt Every Drive Setting

Range of motion shifts. Strength fluctuates. What worked yesterday may not work tomorrow. AdaptGO™ puts **20+ drive settings** in your hands — adjust acceleration, top speed, turning sensitivity, brake distance, and more without ever calling a technician.



... and 12+ more AdaptGO™ settings to dial in your perfect drive.

HOW TO UNFOLD



Your FOLD & GO WHEELCHAIR is super simple to unfold and unfold. It only takes 3-Steps.

Step 01

Gravity Assist

Hold the Backrest & Jerk to Open



Step 02

Frame Lock

Frame Locks Automatically when Unfolded



Step 03

Lower Armrests

Frame Automatically Locks when Unfolded



HOW TO FOLD



Your FOLD & GO WHEELCHAIR is super simple to fold and unfold. It only takes 3-Steps.

Step 01

Raise Armrests

Lift Up the Left and Right Armrests



Step 02

Frame Lock

Push the Lever to UNLOCK the Frame



Step 03

Gravity Assist

Push the Backrest Forward to Collapse



01 Drive Mode

Pull Back the RED Lever on Top of Each Motor Wheel, Towards the Rear of the Wheelchair



02 Manual Mode

Push forward the RED Lever on Top of Each Motor Wheel, Towards the Front of the Wheelchair



To **DRIVE** or To Be **PUSHED**

TO DRIVE: Your **FOLD & GO** is built for independence. Drive yourself wherever life takes you, with ease and confidence.

TO BE PUSHED: On those rare occasions when you need assistance, simply engage the **red levers** on each motor wheel, and your wheelchair is ready to be pushed.

PUSH LIKE A WALKER: Need to stretch your legs? No need for a separate cane or walker—just grab the bar above the backrest and push your **FOLD & GO** like a shopping cart. Stay active, your way!

INDEPENDENCE



Our Magnesium Frame curved to match your spine

-
-
-
-



Ergonomically Sculpted for All-Day Comfort

Our **Magnesium Frame** is designed with your body in mind. The **curved backrest frame** follows the natural shape of your spine, providing superior ergonomic support. Paired with our **contoured backrest and seat bottom cushions**, these carefully crafted curves ensure maximum comfort—so you can sit with ease, all day long.



The Advantages of **FOLD & GO Frames**

Frame Shape: Engineered for a Smoother Ride

Our **Magnesium Frame** absorbs shocks and vibrations, ensuring a smoother ride over bricks, cobblestones, pavers, and rough terrain for maximum comfort and control.

Built-In: Front Wheel Suspension

Two **Red Spring Shocks** located on each of the Front Caster Wheels to absorb impact, adding extra comfort and support over rocky roads and uneven terrain.



5 Gears Speed Control

Increase SPEED

Press the PLUS + button to increase the speed

Decrease SPEED

Press the MINUS - button to decrease the speed

5 Gears Speed & Torque

Gear & Torque Limits

Gear 1 = 0.5 MPH & 20% Torque

Gear 2 = 1 MPH & 40% Torque

Gear 3 = 2 MPH & 60% Torque

Gear 4 = 3 MPH & 80% Torque

Gear 5 = 4 MPH & 100% Torque



Power ON/OFF Button

Press the Center button to turn ON/OFF the Wheelchair

Odometer

Keep Track of Every Mile in the Lower Right Corner

Battery Indicator Lights

Charging Bar Levels

5 White Bars Reflect the Battery Level. The White Bars Turn Off 1-by-1 Starting on the Right Side Down to the Last Bar.

BATTERY SAVER MODE: 1 Yellow Bar Remaining Chair Slows to 1 MPH Max speed to help Conserve Battery Life.

HOW TO CHARGE THE BATTERIES

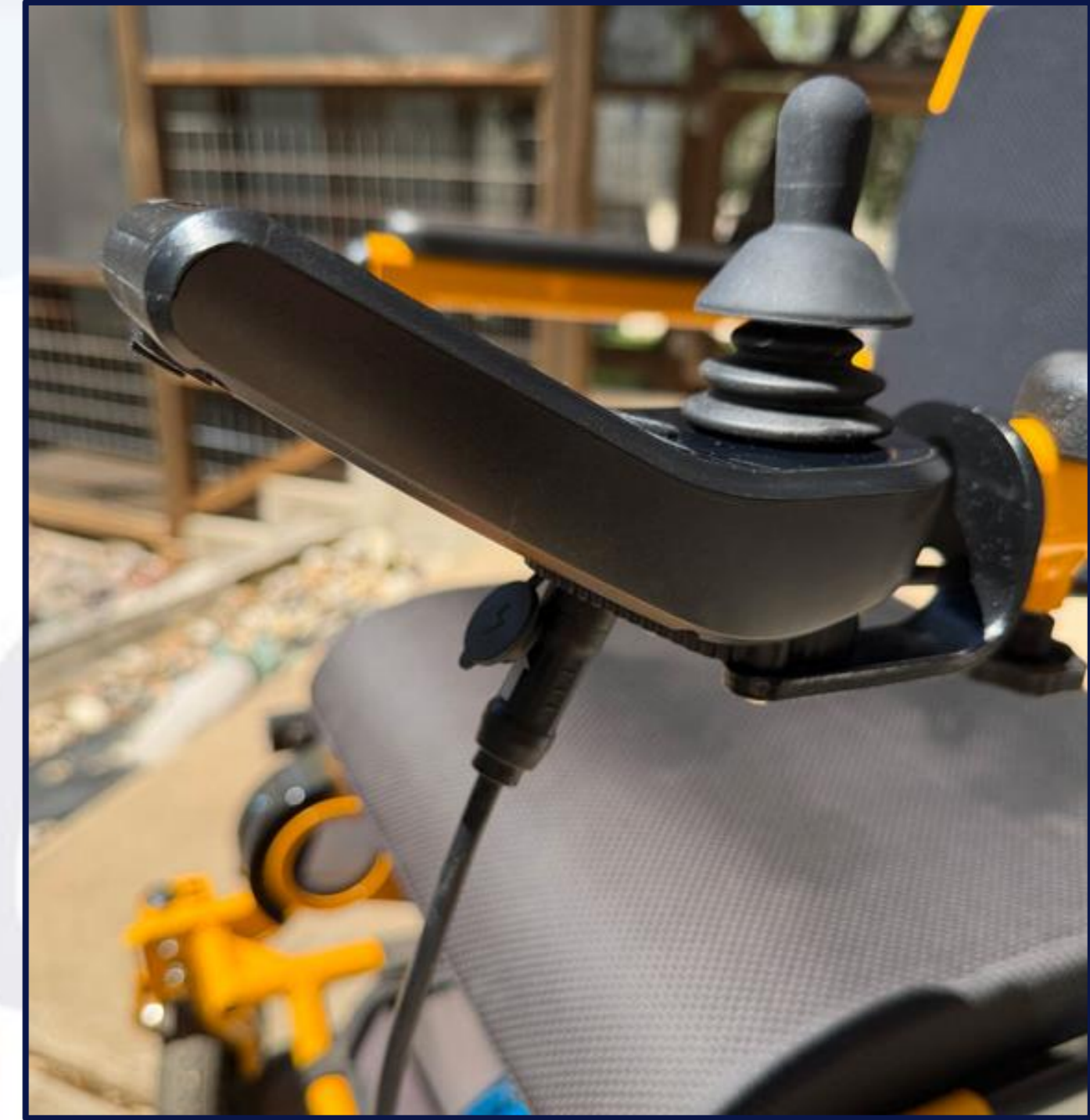
ELECTRICITY CAUTION: Only plug the charger into a standard in-wall 110V or 220V outlet. Do not use a GFI outlet, light switch/plug combo, extension cord, power strip, metal external outlet or surge protector.



SINGLE Battery Charging

PLUG the charger **directly** into the port near the top of each **battery**. This allows you to leave the chair in the car and charge the batteries separately indoors.

Total Charging Time: 24 hours—each battery takes 12 hours individually to fully charge.



DUAL Battery Charging

PLUG the charger **directly** into the port on the bottom of the **joystick** to charge both batteries simultaneously.

Total Charging Time: 12 hours—the fastest way to power up your FOLD & GO.

TWO Charging Options

16 MILES PER CHARGE

BATTERY LIFE: 1000 CHARGES

Ark550® Dimensions

- Net Weight with Batteries: 104 LBS
- Weight Capacity: 550 LBS
- Unfolded Height 45 inches
- Overall Width: 28 inches
- Folded Height 42 inches (with Joystick, 36 inches w/o)
- Folded Depth: 18 inches
- Seat Width Between Armrests: 24 inches
- Seat Cushion: 24 inches by 19 inches
- Backrest Height: 23 inches
- Floor to Seat Cushion Height: 23 inches
- Floor to Armrest Height: 34 inches
- Rear All-Terrain Tread Wheel: 14 inches by 3 inches
- Front All-Terrain Tread Wheel: 8 inches by 2.5 inches
- Front to Back Wheelbase Length: 51 inches
- Super Tight Turning Radius: 36 inches



NO LIMITATIONS



25°
HILL
+ CLIMBING

**More than Standard ADA 8-12° Slopes
Our Chairs Are Built to Climb the Great Outdoors**

From rugged trails to steep driveways, parking garages to cruise ship gangways, crosswalks to airport terminals—real-life obstacles demand more than just a standard wheelchair. That's why we designed our chairs to tackle it all, giving you the freedom to go where you want, with confidence.

NO BOUNDARIES

Common Sense Driving Practices

UNDERSTANDING YOUR ENVIRONMENT

Don't try to drive your FOLD & GO WHEELCHAIR while you are on a transportation vehicle, like a bus, subway, train, or airplane.

While using public transportation vehicles, ALWAYS hook the floor straps to the frame of your FOLD & GO WHEELCHAIR.

In many countries, power wheelchairs are NOT allowed to drive on public roads. You must observe and obey all traffic laws.

Your FOLD & GO WHEELCHAIR is designed to be weatherproof. Disassembling any of the electronic components or removing the batteries from their watertight housing sleeve will compromise the weatherproof seal on the electronics.

When driving your FOLD & GO WHEELCHAIR always sit back in the seat, avoid leaning or bending forward over the footrest.

Use caution driving your FOLD & GO WHEELCHAIR at night. Your chair comes with reflective stickers on the front and rear. Headlights and Taillights are also available under the accessories page on our website.



When driving your FOLD & GO WHEELCHAIR on slopes or hills, always approach at a straight angle to the incline. Choose the approach that best minimizes any side angles. If you do not make it up the slope on the first attempt reverse back down the slope while keeping the wheelchair straight. NEVER try to turn around while on a slope.

When getting in or out of your FOLD & GO WHEELCHAIR remember to turn OFF the joystick. Otherwise, if you bump the joystick with your arm, the chair will move unexpectedly on you.

Never attempt to drive your FOLD & GO WHEELCHAIR down or up a staircase, or escalator. No matter how much fun it looks like it would be.

When an elevator is not available, then fold up your FOLD & GO WHEELCHAIR and roll it up or down a staircase. Put the Motor wheels into MANUAL mode to help the chair roll up each step with ease.

MONTHLY MAINTENANCE

Huh. Turns out
Monthly Maintenance
wasn't a suggestion.



Your FOLD & GO Wheelchair is held together by roughly 2 Dozen Bolts. The same bolts that let it FOLD & GO so easily. To Keep your Chair driving straight and feeling solid, give every bolt a quick tightening once a month.

It takes about 5 minutes. Those 5 minutes add Years of life to your wheelchair.



Help Your Chair Last for YEARS TIGHTEN THE BOLTS

Monthly Email Reminders

Each month we will send you an email with a link to our YouTube Video showing exactly How to Tighten Your Bolts.

Tool Kit & Wrench Included

Every FOLD & GO ships with the Tool Kit & Wrench you need. Keep them with your chair, bolts can loosen on rough trails, on long drives, and especially during turbulence on flights.

WeatherPROOF

Our **FOLD & GO Wheelchairs** are built for **everyday use**—rain or shine. **Fully weatherproof**, they're designed to handle any conditions, so you can drive with confidence anywhere, anytime.

Our **3-Year Warranty** covers **ALL weather driving conditions...PERIOD!**



IMPORTANT WARNING
RINSE OFF ALL CHEMICALS:
After using your wheelchair at **water parks, beaches, lakes, ponds, or the ocean**, **immediately rinse it with clean water**. This prevents corrosion by removing harmful chemicals, saltwater, and debris from the metal frame, electrical system, and cables.

4-SEASONS of DRIVING CONDITIONS