



NEUDOL® USER MANUAL



SMALL

in STATURE

LARGE

in PERFORMANCE

NEUDOL

ADAPTIVELY SMALL & FEISTY

— FAA & IATA Approved

Designed and Built for Smaller Sized Individuals: Children, Teens, Little People (medical condition known as Dwarfism) and Small Adults. Overall, Weight of up to 150 lbs and Height up to 5 Feet Tall.

Automobile



Airplane



Train



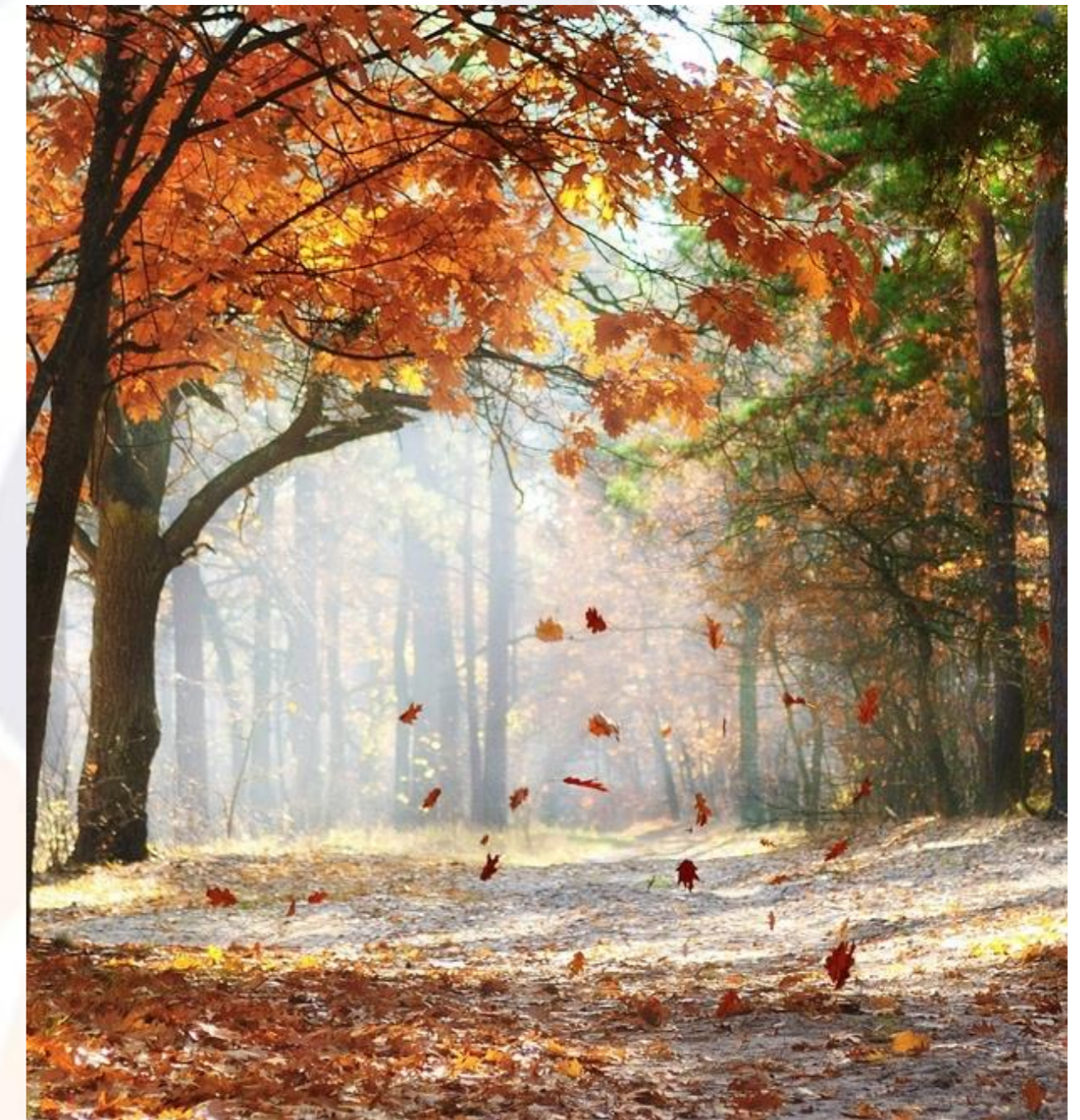
Cruise Ship



RV



WEATHERPROOF



Explore your World
Drive Rain or Shine

Neudol® is 100% Weatherproof. Designed to be driven everyday no matter what the current weather condition is.

Our 3-Year Warranty covers ANY & ALL Weather Driving Conditions!

DO NOT SUBMERGE THE WHEELCHAIR INTO RIVERS, PONDS, LAKES, BATHROOM SHOWERS, SWIMMING POOLS OR THE OCEAN.

Built for — The Adventurous Person



Bump-Dampening

Oval Frame absorbs all the bumps we drive over during the day. Wheelchairs do not have shocks so our frame handles the work for you.

Adjustable Seat Height

Designed for small framed people ranging up to 5' feet tall. Seat height from ground ranges from 15" to 20". This chair adapts to fit your height.

The Ultimate Caregiver Remote Bluetooth for Wireless Driving

JOYSTICK KNOB: Use the control knob to steer the chair 360 degrees.

LOCK BUTTON: Press this button to **LOCK** the Chair's Joystick from driving, while this Remote is actively driving the chair.

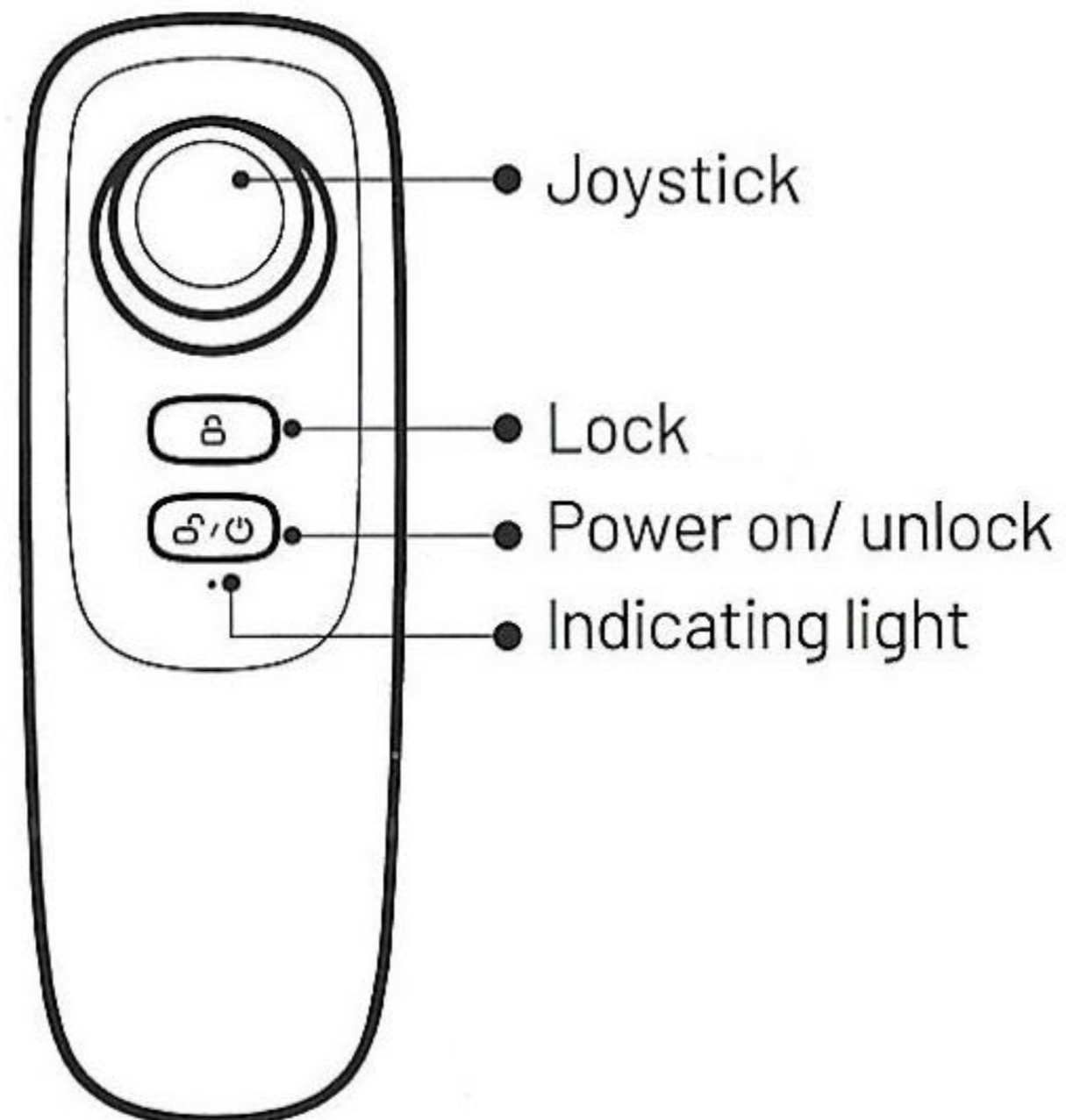
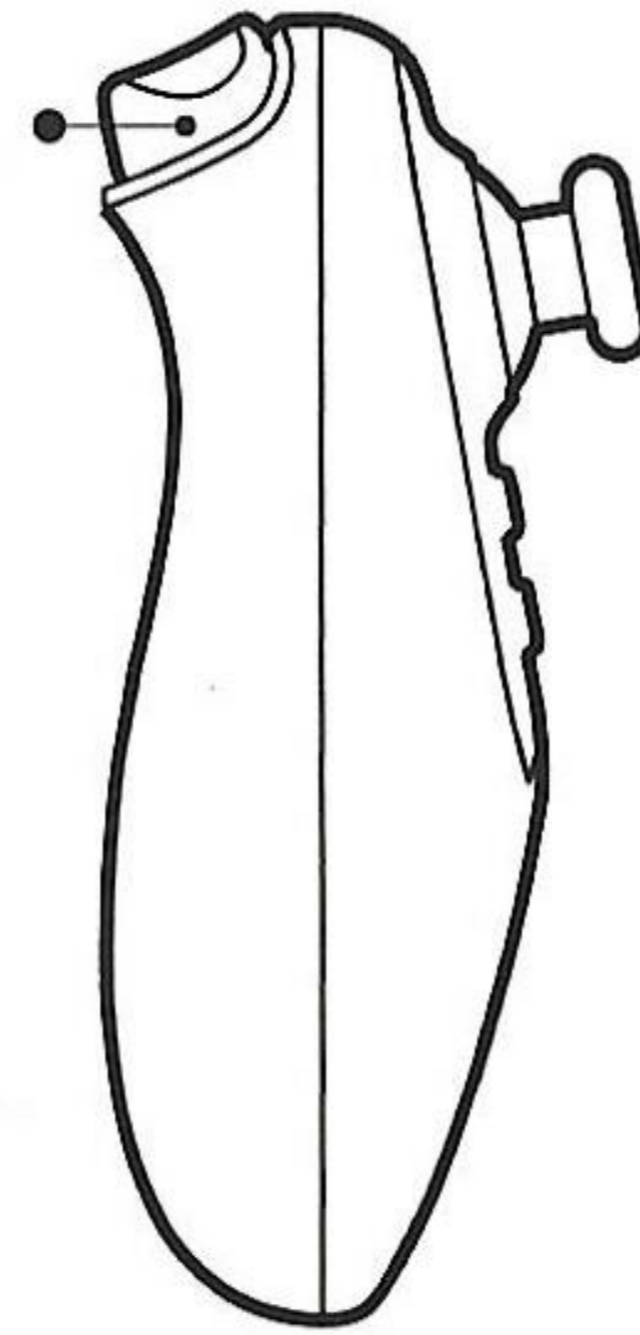
POWER ON/OFF & UNLOCK: Press this button to **UNLOCK** the Chair's Joystick to enable driving and to turn off this Remote.

SPEED ADJUSTING TRIGGER: Press this Trigger to change Speed Gears from level 1-3.

AUTO SHUT OFF: This Remote will automatically power off when not used for more than **20 seconds**.

FOLD & GO WHEELCHAIRS

Speed adjusting



Bluetooth Remote Control

Need a Chauffeur?

Every FOLD & GO comes with a Bluetooth
Handheld Caregiver Remote Controller.
Press the **Power Button** to turn ON/OFF.
Press the **Lock Button** to prevent the
Joystick from Driving the Chair.

When Using the Remote Control – Chair is
limited to 50% Speed or Gear 3 for Safety.





20+ Drive Settings

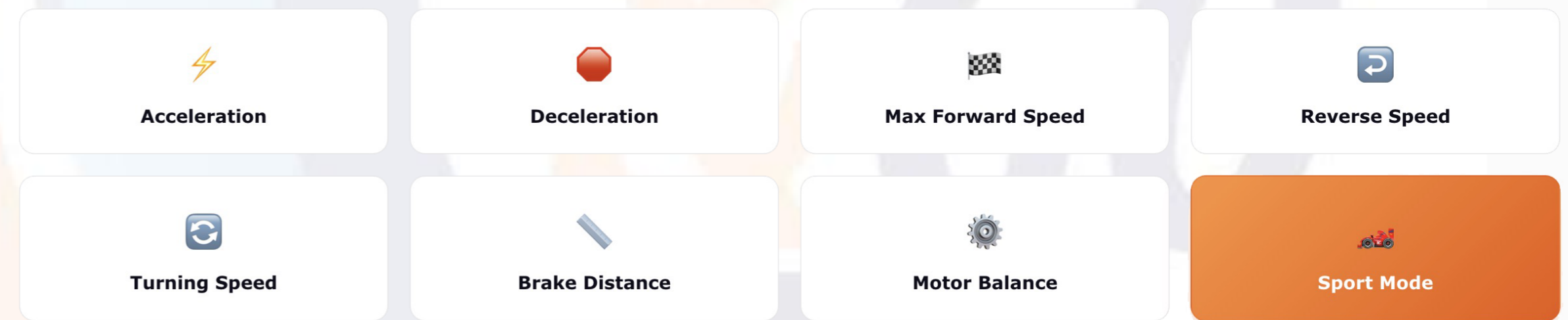
AdaptGO™ is Designed to Help you customize your drive settings to fit your mobility needs — and great for loved ones caring for those of us with declining mobility.



AdaptGO™

Adapt Every Drive Setting

Range of motion shifts. Strength fluctuates. What worked yesterday may not work tomorrow. AdaptGO™ puts **20+ drive settings** in your hands — adjust acceleration, top speed, turning sensitivity, brake distance, and more without ever calling a technician.



... and 12+ more AdaptGO™ settings to dial in your perfect drive.

HOW TO UNFOLD



Your FOLD & GO WHEELCHAIR is super simple to unfold and unfold. It only takes 3-Steps.

Step 01

Remote Button

Push UP Arrow Button on Seat Fob



Step 02

Frame Lock

Unfold Backrest until the Frame Lock Clicks



Step 03

Place Seat Cushion

Place Seat Cushion on Seat Base



HOW TO FOLD



Your FOLD & GO WHEELCHAIR is super simple to fold and unfold. It only takes 3-Steps.

Step 01

Remove Seat Cushion

Remove Seat Cushion from Seat Base



Step 02

Backrest Frame Lock

Push Down on Cross Bar to Unlock the Backrest



Step 03

Remote Button

Push DOWN Arrow Button on Seat Fob



01 DRIVE Mode

Pull Back the RED Lever on Top of Each Motor Wheel, Towards the Rear of the Wheelchair



02 MANUAL Mode

Push forward the RED Lever on Top of Each Motor Wheel, Towards the Front of the Wheelchair



To **DRIVE** or To Be **PUSHED**

TO DRIVE: Most of the time in your FOLD & GO we want the freedom and independence to drive ourselves wherever we may want to go.

TO BE PUSHED: On the rare occasion that you want to be pushed. We give you that choice by a click of each red lever on the top of each motor wheel.

PUSH LIKE A WALKER: Sometimes we need stretch our legs and walk for a couple of minutes. Rather than bring a cane or walker with you, just use your FOLD & GO! Grab the bar above the backrest and push your wheelchair like a shopping cart.

INDEPENDENCE



Seat & Backrest Frame curved to match your spine

Ergonomically Sculpted

We contour our backrest frame to be ergonomic to follow the curvature of your spine. We also provide additional support with our contoured backrest and seat bottom cushions. These ergonomic curves allows us and our customers to sit comfortably in our wheelchairs all day long.



The Advantages of **NEUDOL**



Oval Frame Shape

Increases bump-dampening while driving over bricks, cobble stones, pavers, rocks, and more

Seat Cushion Spring Shock

Under each contoured seat cushion are two red spring shocks to added comfort over rocky roads



5 Gears Speed Control

Increase SPEED

Press the PLUS + button to increase the speed

Decrease SPEED

Press the MINUS - button to decrease the speed

5 Gears Speed & Torque

Gear & Torque Limits

Gear 1 = 0.5 MPH & 20% Torque

Gear 2 = 1 MPH & 40% Torque

Gear 3 = 2 MPH & 60% Torque

Gear 4 = 3 MPH & 80% Torque

Gear 5 = 4 MPH & 100% Torque



Power ON/OFF Button

Press the Center button to turn ON/OFF the Wheelchair

Odometer

Keep Track of Every Mile in the Lower Right Corner

Battery Indicator Lights

Charging Bar Levels

5 White Bars Reflect the Battery Level. The White Bars Turn Off 1-by-1 Starting on the Right Side Down to the Last Bar.

BATTERY SAVER MODE: 1 Yellow Bar Remaining Chair Slows to 1 MPH Max speed to help Conserve Battery Life.

HOW TO CHARGE THE BATTERIES

16 MILES PER CHARGE

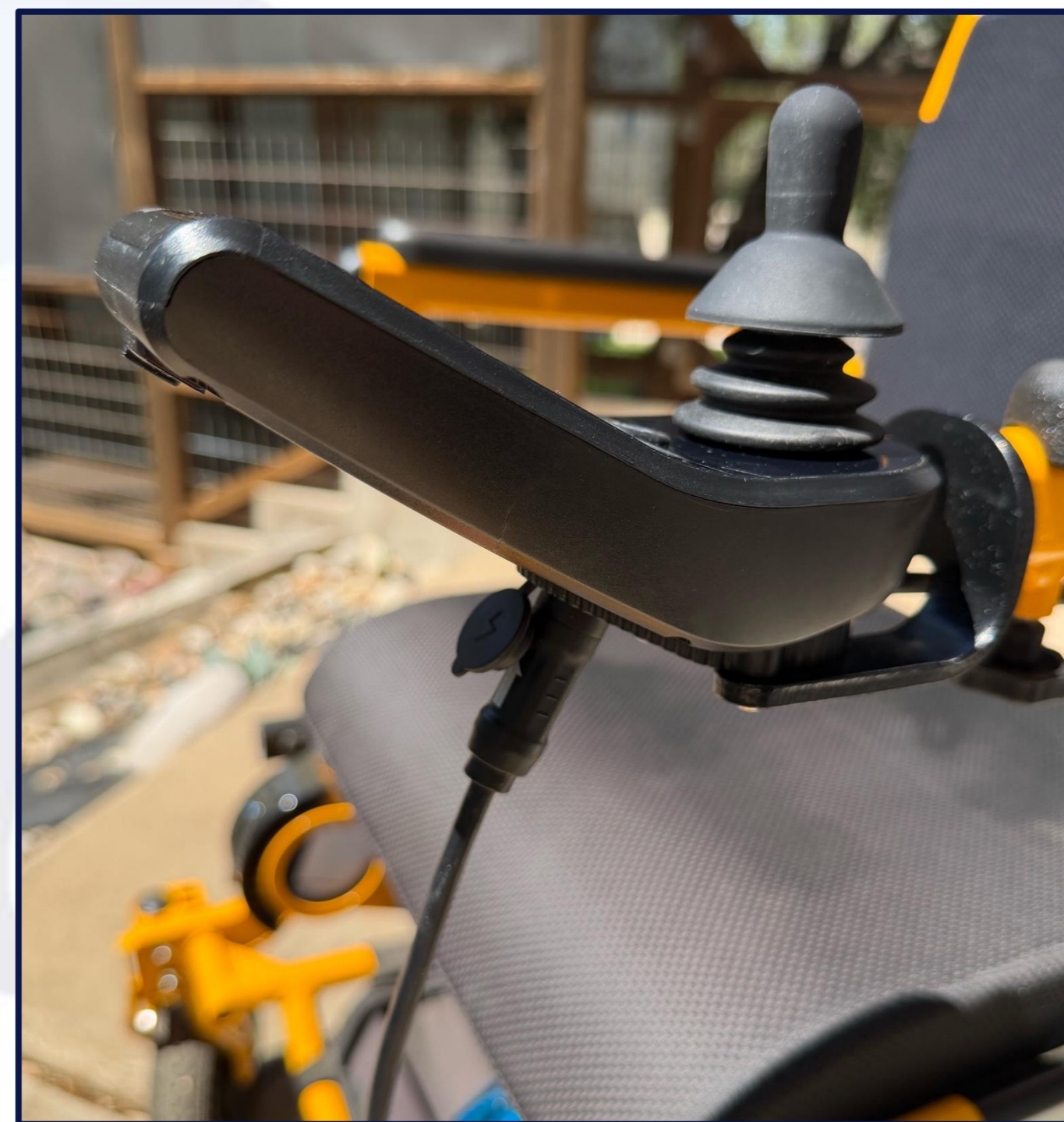


External Battery Charging

PLUG the External Cable into the Circular end of the Charger. Then plug the charger into the top of each battery. This METHOD allows you to leave the chair in the car and bring just the batteries into the house to charge individually.

Total Charging Time: 10-Hours (5-Hours for each battery)

TWO Charging OPTIONS



In-Chair Battery Charging

PLUG the Circular end of the charging cord into the port on the bottom of your joystick. This METHOD charges both batteries simultaneously. This is by far the fastest of the two charging options.

Total Charging Time: Only 5-Hours

BATTERY LIFE: 1000 CHARGES

NEUDOL® Dimensions

- Net Weight with Batteries: 72 LBS
- User Weight Limit: Up to 150 LBS
- Seat Height Travel Range: Up to 5 inches
- Unfolded Height 36 inches
- Overall Width: 21 inches
- Folded Height 18 inches
- Folded Length: 32 inches
- Seat Width Between Armrests: 17 inches
- Seat Cushion: 16 x 16 inches
- Backrest Seat Height: 18 inches
- Floor to Top of Backrest Height: 32 to 37 inches
- Floor to Seat Cushion Height: 15 to 20 inches
- Floor to Armrest Height: 22 to 27 inches
- Rear All-Terrain Tread Wheel: 12 inches by 2.5 inches
- Front All-Terrain Tread Wheel: 8 inches by 2 inches
- Front to Back Wheelbase Length: 38 inches
- Super Tight Turning Radius: 32 inches



NO LIMITATIONS



25° HILL CLIMBIN G

Ascend a Steep Object

Everyday scenarios are steeper than an 8-12° handicapped ramp. We built our chairs to Climb: trails, driveways, parking garages, gangways of cruise ships and airports, cross walks, street corners, and MORE!

NO BOUNDARIES

Common Sense Driving Practices

UNDERSTANDING YOUR ENVIRONMENT

Don't try to drive your FOLD & GO WHEELCHAIR while you are on a transportation vehicle that is in motion, like a bus, subway, train, light rail or airplane.

While using public transportation vehicles, ALWAYS secure the floor straps to the frame of your FOLD & GO WHEELCHAIR.

In many countries, power wheelchairs are NOT allowed to drive on public roads. You must observe and obey all traffic laws.

Your FOLD & GO WHEELCHAIR is designed to be weatherproof. Disassembling any of the electronic components or removing the batteries from their watertight housing sleeve will compromise the weatherproof seal on our electronics.

When driving your FOLD & GO WHEELCHAIR always sit back in the seat, avoid leaning over the armrests and/or bending forward over the footrest.

Use caution driving your FOLD & GO WHEELCHAIR at night. Your chair comes with reflective stickers on the front and rear. Headlights and Taillights are also available under the accessories page on our website.



When driving your FOLD & GO WHEELCHAIR on slopes or hills, always approach at a straight angle to the incline. Choose the approach that best minimizes any side angles. If you do not make it up the slope on the first attempt reverse back down the slope while keeping the wheelchair straight. NEVER try to turn around while on a slope.

When getting in or out of your FOLD & GO WHEELCHAIR remember to turn OFF the joystick. Otherwise, if you bump the joystick with your arm, the chair will move unexpectedly on you.

Never attempt to drive your FOLD & GO WHEELCHAIR down or up a staircase, or escalator. No matter how much fun it looks like it would be.

When an elevator is not available, then fold up your FOLD & GO WHEELCHAIR and roll it up or down a staircase. Put the Motor wheels into MANUAL mode to help the chair roll up each step with ease.

MONTHLY MAINTENANCE

Huh. Turns out
Monthly Maintenance
wasn't a suggestion.



Your FOLD & GO Wheelchair is held together by roughly 2 Dozen Bolts. The same bolts that let it FOLD & GO so easily. To Keep your Chair driving straight and feeling solid, give every bolt a quick tightening once a month.

It takes about 5 minutes. Those 5 minutes add Years of life to your wheelchair.



Help Your Chair Last for YEARS TIGHTEN THE BOLTS

Monthly Email Reminders

Each month we will send you an email with a link to our YouTube Video showing exactly How to Tighten Your Bolts.

Tool Kit & Wrench Included

Every FOLD & GO ships with the Tool Kit & Wrench you need. Keep them with your chair, bolts can loosen on rough trails, on long drives, and especially during turbulence on flights.

WeatherPROOF

NEUDOL is 100% Weatherproof.
Designed to be driven everyday no
matter what the current weather
conditions.

Our 3-Year Warranty covers ALL
weather driving conditions...PERIOD!



4-SEASONS of DRIVING CONDITIONS